

## How to recognize an empirical study

### Source

Was the article published in an academic, scholarly, or professional journal? Did you locate it in one of the nursing databases on GCC Library's website?

### How long is the article?

Empirical studies often are lengthy with 5-20+ pages.

### Was data collected?

Does the article's abstract mention a study, observation, analysis, and/or the number of participants/subjects?

### Sections often found in scholarly articles about empirical studies

- Abstract - a brief description
- Introduction - states purpose, scope, and rationale for the study; states the hypothesis; reviews the literature
- Methodology - description of the research methods, including a description of the population sample and data collection procedure/s
- Results - Data collected is discussed and analyzed
- Discussion - Interpretations and implications of the study
- Conclusions - Findings are summarized; analysis of data is explained
- References - Aarticles, books, and other sources consulted are cited

### Ask yourself

Is enough detail provided about the study that you could recreate the it and test the results with the information presented?

### Searching for an empirical study

Try adding **AND empirical** as a title word to your topic keywords in the search boxes. Example:

Searching: CINAHL Plus with Full Text | Choose Databases

breast cancer	TI Title -
AND - empirical	TI Title -

Look for a box on the search page of the database you select that will limit your search results to scholarly or peer-reviewed articles. Be aware that all articles in scholarly journals are not peer-reviewed.

# GCC Library Research for Nursing Students

## How to locate the nursing databases:

1. Begin at [lib.gccaz.edu/lmc](http://lib.gccaz.edu/lmc)
2. Click the **Library Databases** link, on the left side of the search box.
3. Find **Nursing, Medicine & Health** in the **Database Subjects** list. Click *Show More...* at the bottom of the list.
4. A database description will pop up when you put the cursor on a title.

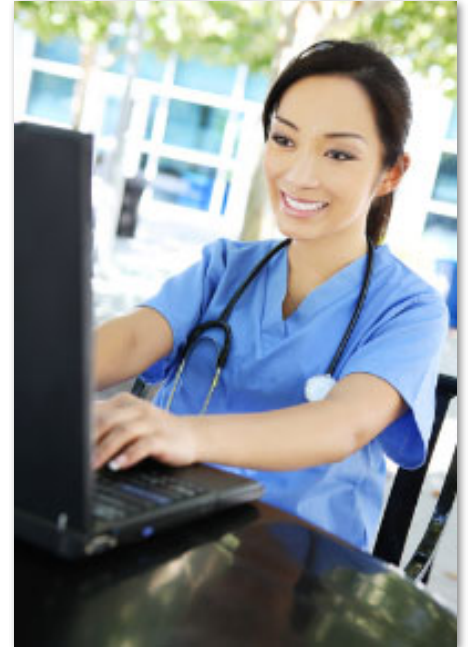


Image: ana.nursingworld.org

## Recommended GCC Library nursing databases

### Nursing, Medicine & Health

- CINAHL: A Cumulative Index of Nursing and Allied Health Literature
- Health Reference Center Academic
- Anatomy.TV
- Health Source: Nursing/Academic
- Health Source - Consumer
- Health & Wellness Resource Center
- MEDLINE [Biomedical Journals]
- ScienceDirect
- Salem Health (including Magill's Medical Guide)
- PubMed
- Films on Demand: Health & Medicine
- Journal of Strength and Conditioning Research
- Nursing & Allied Health
- Nursing Made Incredibly Easy

## Need help?

**Ask a Librarian** 24/7 chat:

Find the chat box on the right side of the Library's home page.

**Reference Desks:**

623-845-3112 (Main)  
623-888-7112 (North)